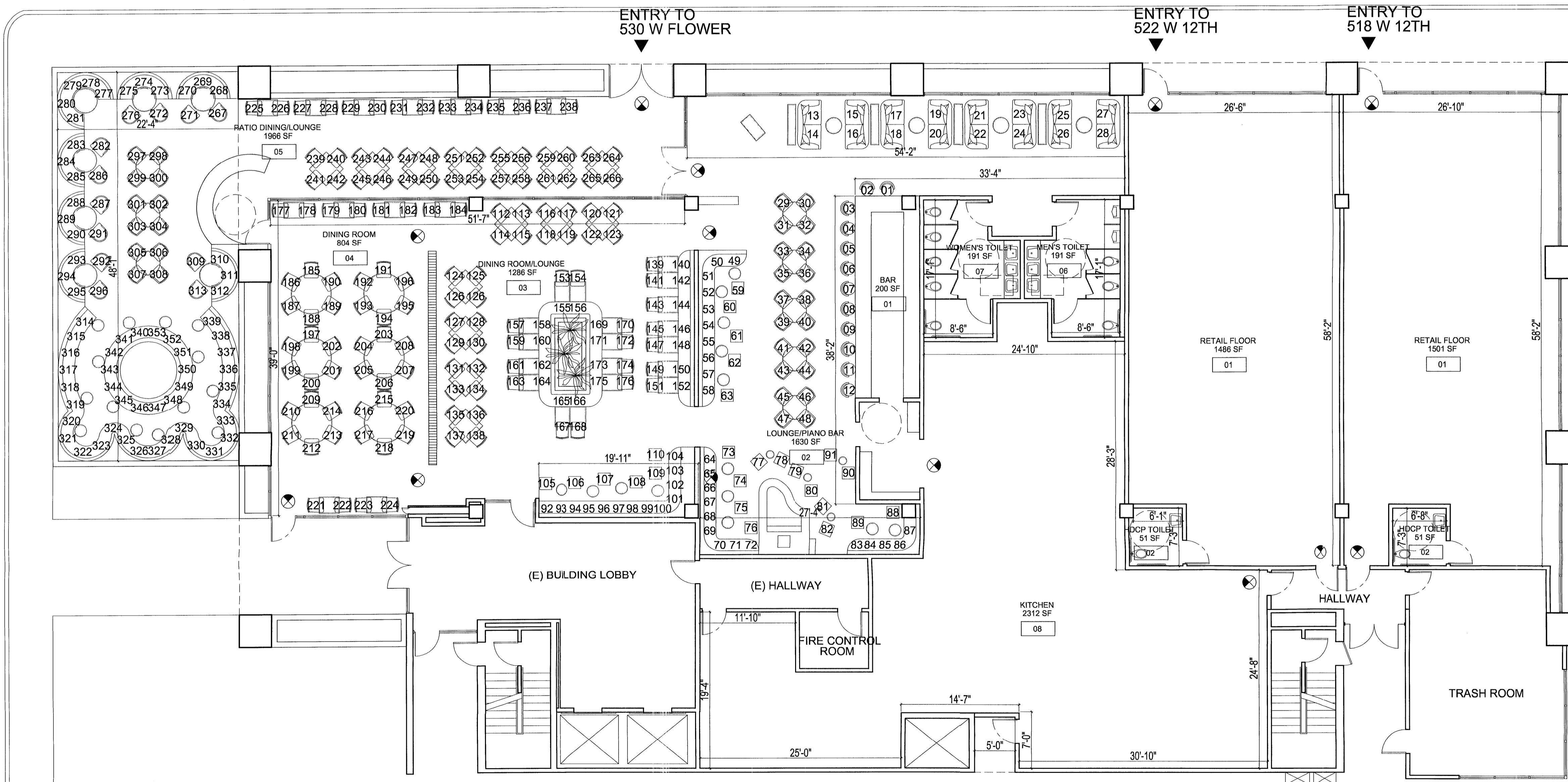


S. FLOWER ST.

W 12TH ST



1 GROUND FLOOR PLAN
SCALE: 1/8"=1'-0"

**EXIT ANALYSIS
LEGEND & SYMBOLS:**

- (10) Calculated occupants
- 200 Cumulative area total
- 20 Cumulative occupant load @ door or stair
- 102" Required exit width, in inches
- 180" Provided exit width, in inches
- Accessible Path of Travel

**EXIT ANALYSIS
NOTES:**

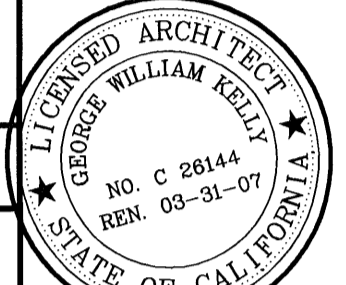
- A. All new exit doors are 3'-0" wide unless otherwise noted.
- B. Allowed occupants through 3'-0" door is calculated at 180, based on .2" per occupant required.

LEGEND:

- ◀ ENTRY
- ⊗ EXIT
- PROPERTY LINE

KELLY ARCHITECTS

2404 wilshire blvd, suite 1e
los angeles, ca 90057-3310
t e l . 2 1 3 . 3 8 0 . 8 4 9 8
f a x . 2 1 3 . 3 8 0 . 8 4 9 9



THE DRAWINGS, SPECIFICATIONS, IDEAS, DESIGNS AND ARRANGEMENTS REPRESENTED THEREBY ARE AND SHALL REMAIN THE PROPERTY OF THE ARCHITECT, AND NO PART THEREOF SHALL BE COPIED, DISCLOSED TO OTHERS OR USED IN CONNECTION WITH ANY WORK OR PROJECT OTHER THAN THE SPECIFIC PROJECT FOR WHICH THEY HAVE BEEN PREPARED AND DEVELOPED WITHOUT THE WRITTEN CONSENT OF THE ARCHITECT. VISUAL CONTACT WITH THESE DRAWINGS OR SPECIFICATIONS SHALL CONSTITUTE CONCLUSIVE EVIDENCE OF ACCEPTANCE OF THESE RESTRICTIONS.
© 2007 Kelly Architects

PROJECT
1212 Flower St.
530 W. Flower St.
Los Angeles, CA
90015

DATE
MARCH 15, 2007

ISSUED FOR
CUP

INFO
Drawn by: Scale: As Shown
EDW
Checked by: Job no: 703
GWK
Origin date: FEBRUARY 15, 2007

TITLE
GROUND FLOOR PLAN

NUMBER
A-2

KEYNOTES:

- 1. Parking meter, typ.

EXHIBIT "A"
Page No. 2 of 2
Case No. ZA 2007-1362 CWB